

# Team Regis

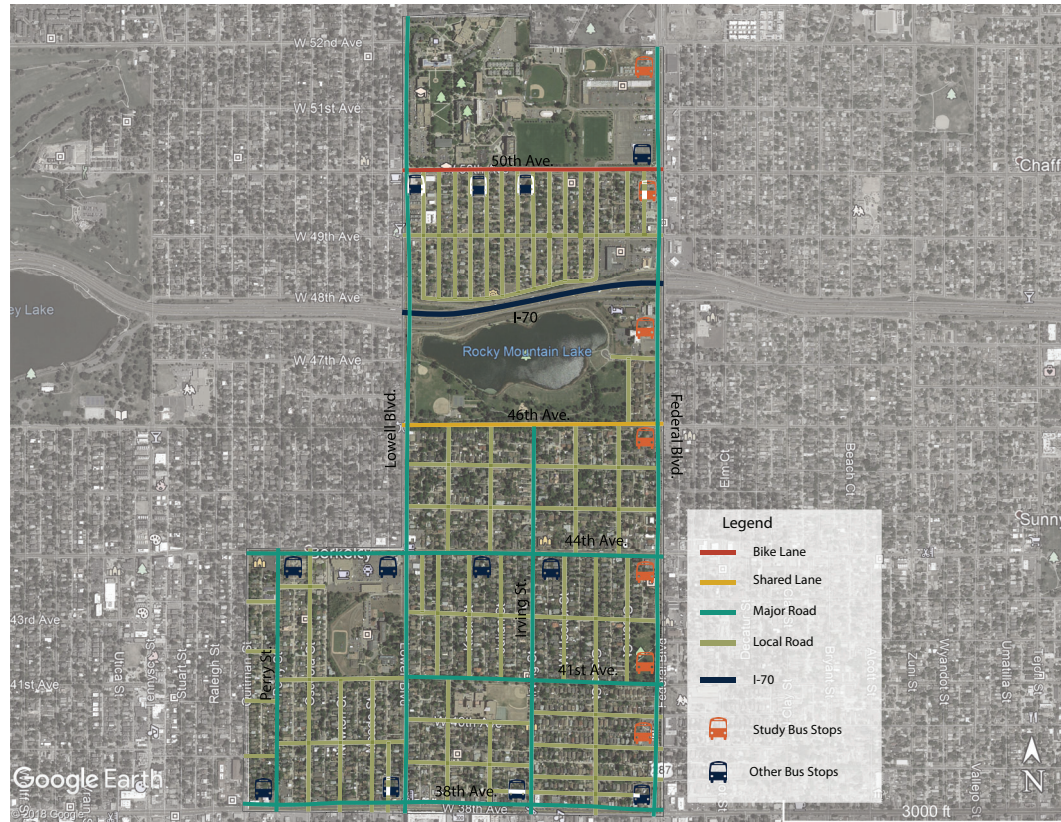
Federal Boulevard Bus  
Stop Assessments

Ahmad Alhammadi, Ian Conrardy, Bryn McKillop, Andrea Vaughn

URPL 5010

# Project Context

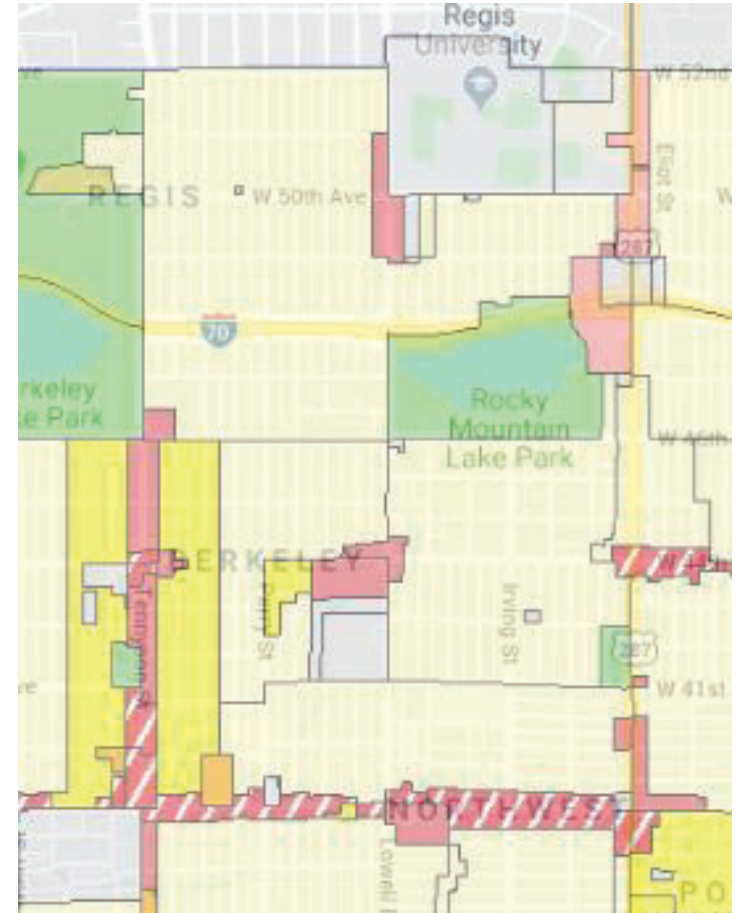
## Study Area



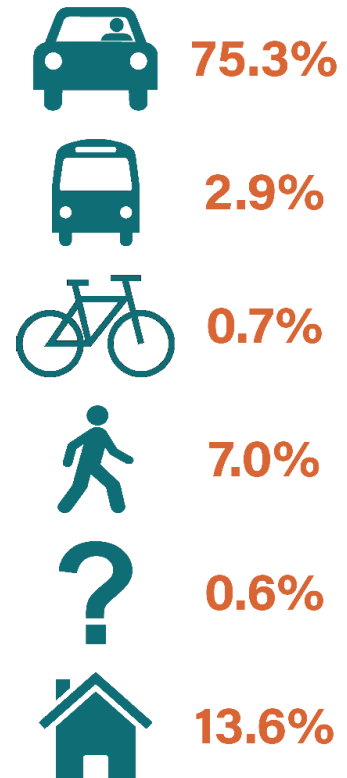
## Land Uses

### Legend

- Single Unit (SU)
- Two Unit (TU)
- Multi Unit (MU, RH, RO, TH)
- Residential Mixed Use (RX)
- Commercial Corridor (CC)
- Mixed Use (MX, M-GMX)
- Main Street (MS)
- Cherry Creek North (C-CCN)
- Downtown (AS, C, CPV, GT, LD, TD)
- Downtown - Civic (D-CV)
- Industrial - Light (I-A)
- Industrial - General (I-B)
- Industrial - Mixed Use (I-MX, M-IMX)
- Campus (EI, EI2, ENT, H, H2, NWC)
- Special (O-1)
- Open Space - Public Parks (OS-A)
- Open Space - Recreation (OS-B)
- Open Space - Conservation (OS-C)



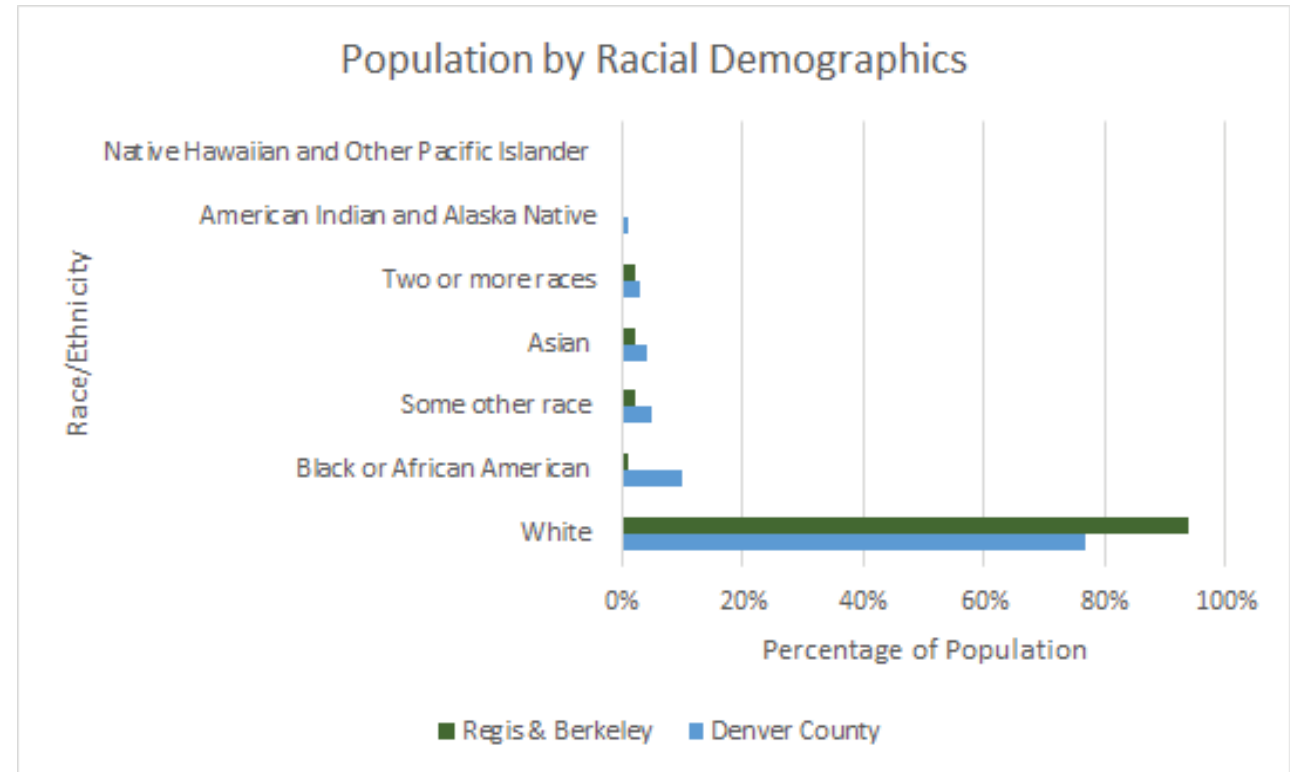
## Travel to Work



## Bus Stop Radius



## Race and Ethnicity



# Site Assessments

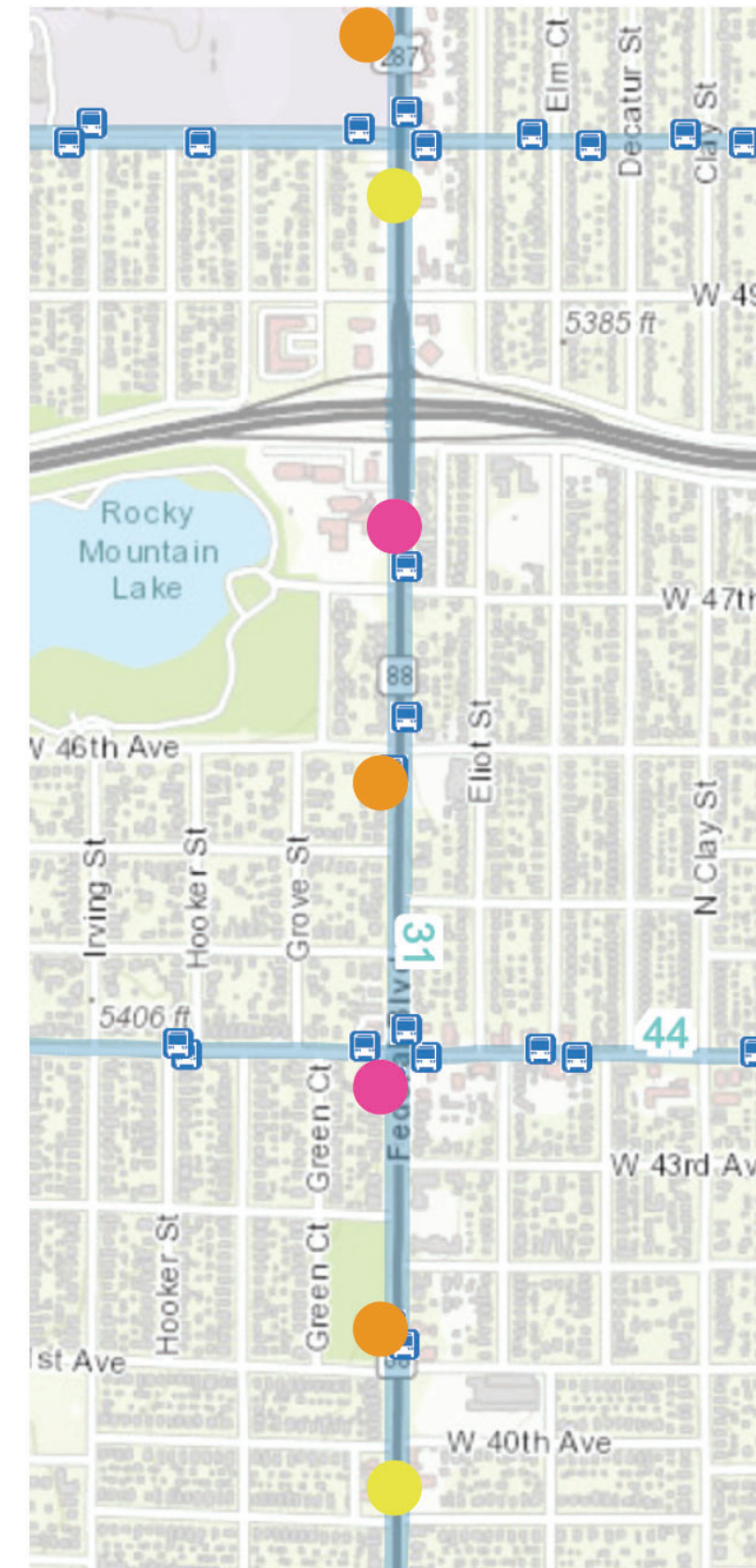
## Road



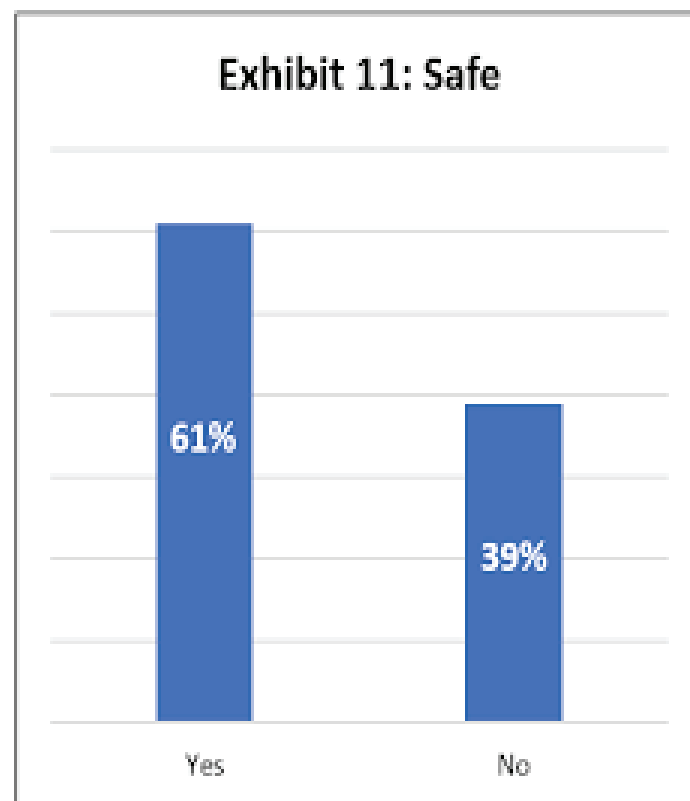
## Sidewalk



## Bus Stop Ratings



## Safety + Amenities



**Exhibit 12: Future Changes**

Recommendations	Count	Percentage
Shelter	7	21%
Trash cans	7	21%
Security cameras	7	21%
Better lighting	5	15%
Routes Maps and Schedules	4	12%
Heating	2	6%
Real time arrival information	2	6%
<b>Total</b>	<b>34</b>	<b>100%</b>

# Gaps

## Narrow Sidewalks



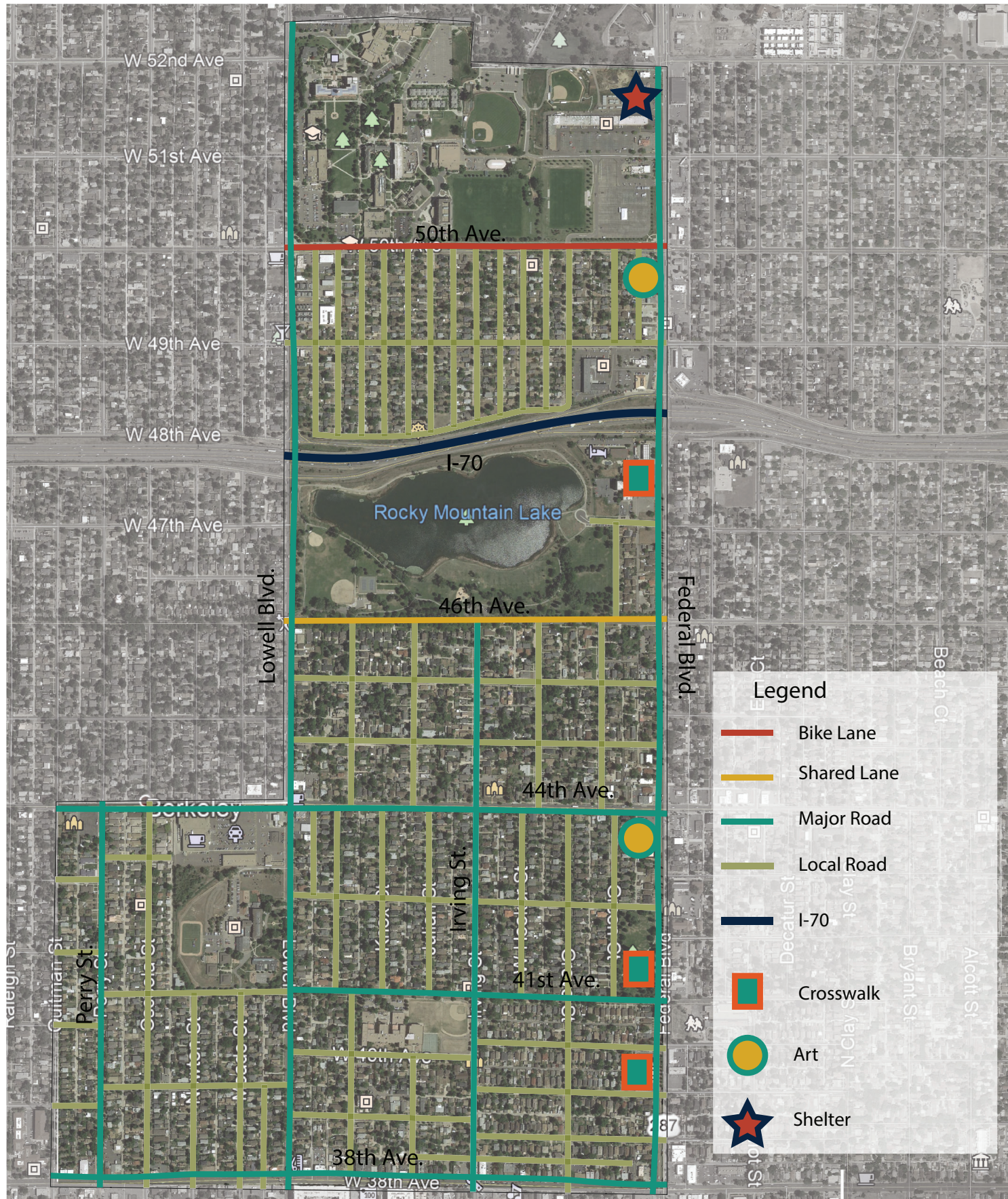
## Pedestrian Connectivity



## I-70 Bridge



# Recommendations



## Existing Infrastructure

- Pedestrian
- Bike

## Missing Infrastructure

- Pedestrian
- Bike

## Experience

- Pedestrian
- Rider