

FEDERAL BOULEVARD

Bus Stop Assessment

STUDY AREA FIVE

Highland & Jefferson Park

Neysa Bermingham

Dana Falk

Manuel Garza De Leon

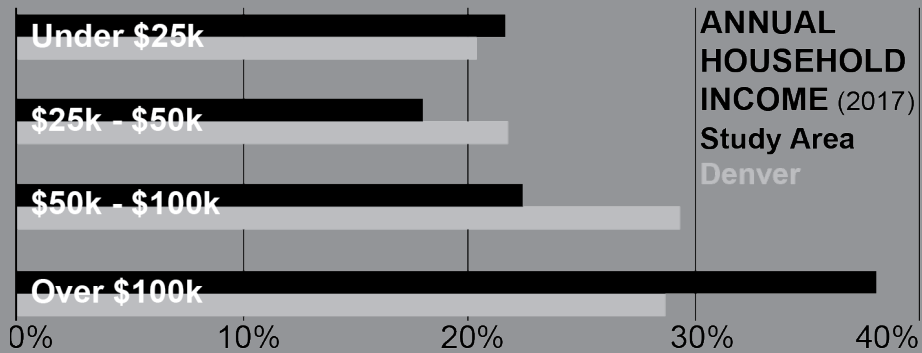
Holland Greer

Planning Methods, URPL 5010

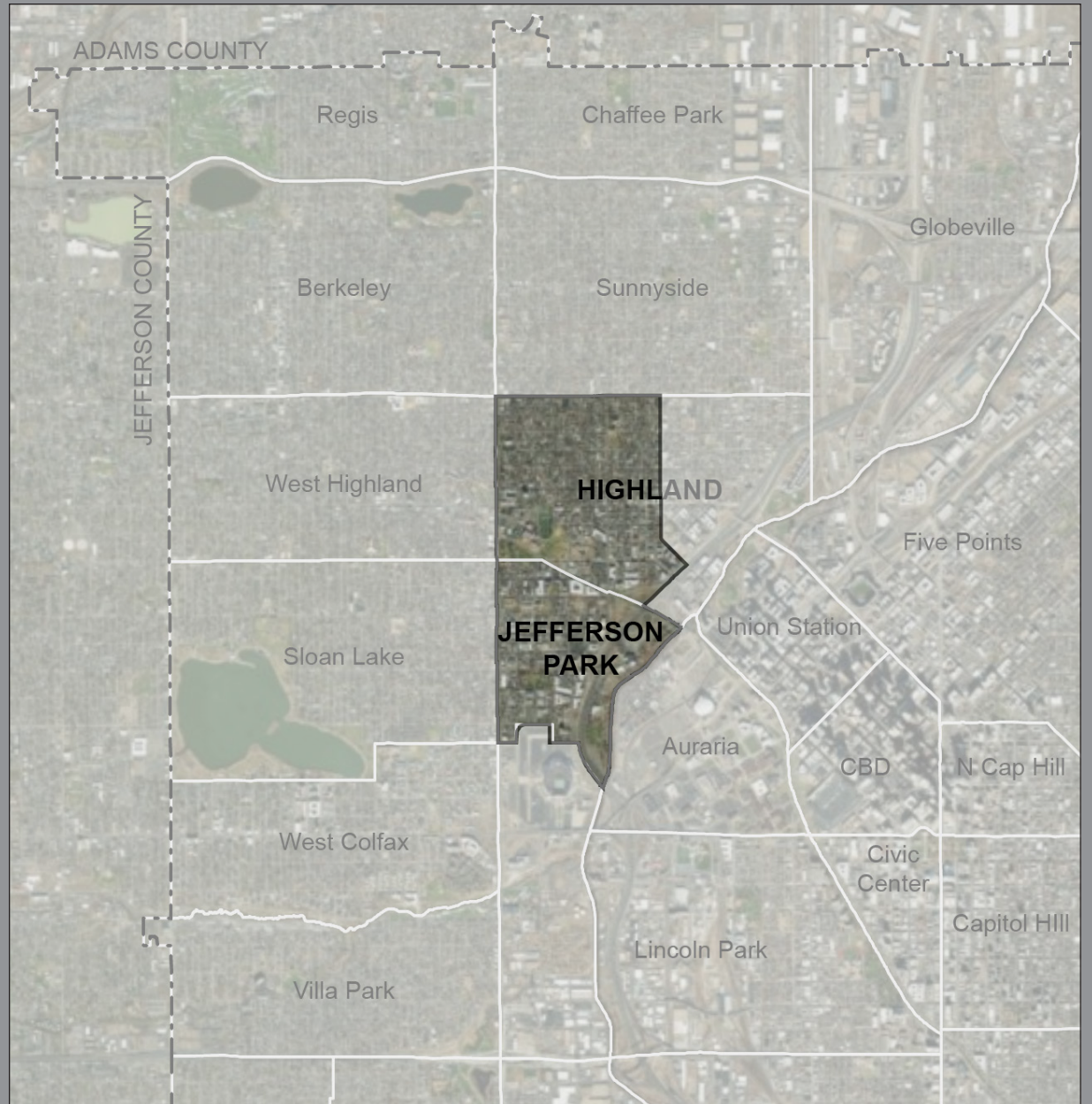
University of Colorado, Denver

Project Context

- **HIGHLAND and JEFFERSON PARK**
- **Age:** 41% population between 25-34
- **Housing:** 61% Renter Occupied
- **Commute to Work:** Transit 7%, Bike 3%, Walk 5%
- **Income:** 38% of Households make more than \$100k annually



Study Area Five FEDERAL BLVD BUS STOP ASSESSMENT

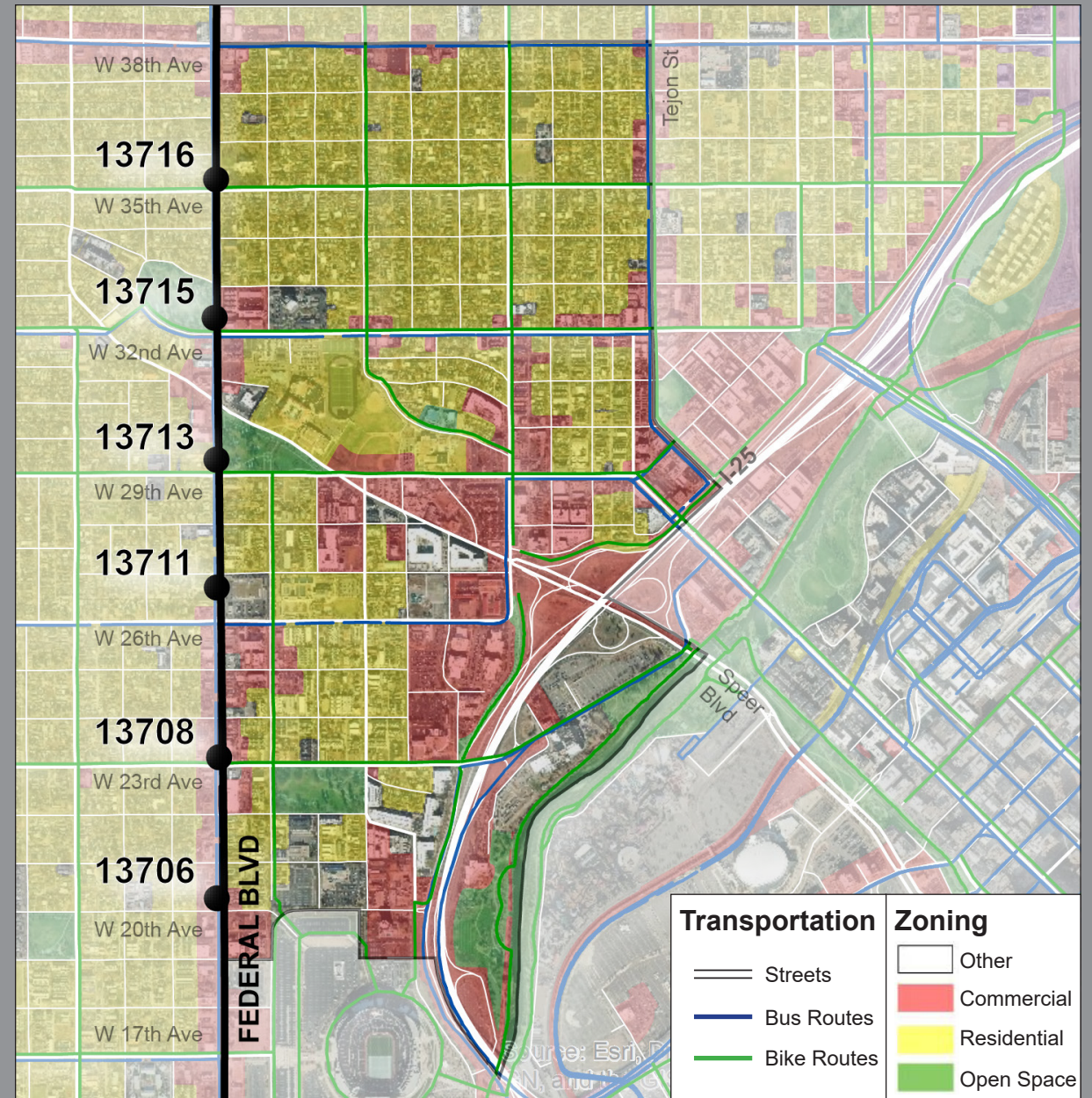


Site Assessment

- **Land Use:** Mostly Residential, Commercial located near Downtown
- **Transportation:** Interstate, Connected Grid, High Bus Connectivity, Bike Routes
- **Urban Fabric:** Alleys, Historic Structures



Study Area Five FEDERAL BLVD BUS STOP ASSESSMENT



Gaps

13716
13715
13713
13711
13708
13706

Existing Transit/Pedestrian Infrastructure Gaps:

Incomplete sidewalks			X		
Distance from bench to street too small	X			X	X
Parking lot entrance and bench too close				X	
Bench and planters spaced too close				X	
Inadequate seating for ridership volume		X	X		

Missing Transit/Pedestrian Infrastructure Gaps:

Missing shelters	X		X		X	X
Missing trash can			X			
Long distance to cross walk				X		
Missing route information sign	X		X	X	X	X

Transit-Rider/Pedestrian Experience Gaps:

Poor lighting	X	X	X			
Lack of shade					X	X
Heavy traffic close to the bus bench	X				X	X
Broken sidewalk concrete					X	X
No barrier between bench and parking					X	
Missed opportunity for youth engagement			X			



Recommendations

- Macro
- Lighting
- Signage
- Language Inclusivity
- Local Engagement Opportunities
- Micro
- Infrastructure Improvements
- Distance and Waiting Space
- Crosswalks
- Shelters
- Accessible Paths

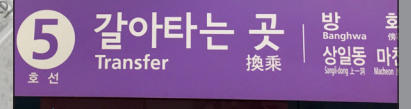
Study Area Five FEDERAL BLVD BUS STOP ASSESSMENT



Lighting



Signage



Language Inclusivity



Local Engagement